



**RX MILLIVOLT
5300 AND 5400**

**ELECTRIC
THERMOSTAT**



The Robertshaw® RX series is a single pole single throw (SPST) thermostat designed for today's demanding Millivolt/Milliamp direct current applications. The RX thermostat features a hermetically sealed reed switch to provide durability and accuracy in the harshest environments.

Features and Benefits

- Rated for 0.67 amps at 5 VDC
- Ambient temperature 230°F (110°C)
- Precise and proven snap action mechanism
- Screw type terminals ensure electrical integrity
- Rugged steel case design
- Bulb and capillary assemblies supplied in nickel plated copper or stainless steel

Advantages

- Millivolt/Milliamp control produces reliable low current/low voltage performance
- Sealed contacts provide survival in the harshest environments
- Robust design leads to increased reliability, durability, and reduced down time

Specifications

- SPST - Break on temperature rise
- Nickel plated brass stuffing boxes available (.250" or .375" NPT and BSP)
- Flat of shaft is down in the OFF position unless otherwise specified
- Dials available in common temperature ranges
- RXN models available up to 900°F (482°C) maximum
- Agency Certification Number
 - UL E12103
 - CSA LR36461
 - EC 87/96/240/M4 (2001)



An ISO 9001 – 2008 Certified Company

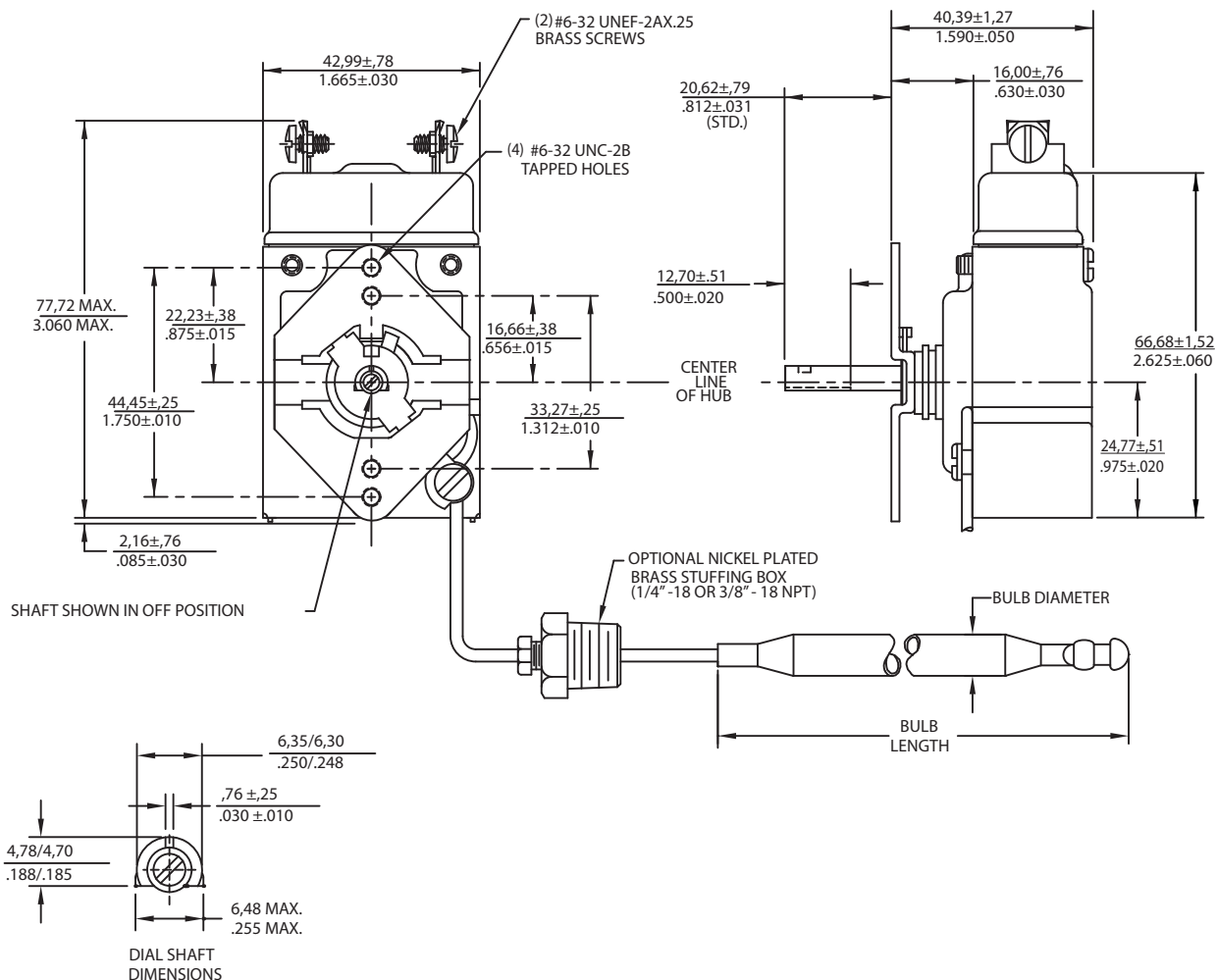


RX MILLIVOLT 5300 AND 5400

ELECTRIC THERMOSTAT

PRODUCT DIMENSIONS

Dimensions are inches and [millimeters].



AVAILABLE BULB DIAMETERS

inches	4.75	6.35	7.92	9.53
[millimeters]	120	161	201	242

AVAILABLE CAPILLARY LENGTHS

24" to 120" in 12" increments
610mm to 3048mm in 305mm increments

NOTE: Use of this control on alternating current (AC) will damage the switch.



Customer Service Telephone 1.800.304.6563
Customer Service Facsimile 1.800.426.0804
HVACCustomerService@robertshaw.com

For Technical Service
Telephone 1.800.445.8299
Facsimile 1.630.260.7294
TechnicalService@robertshaw.com

Robertshaw® and Uni-Line® are trademarks of Robertshaw, its subsidiaries and/or affiliated companies. All other brands mentioned may be the trademarks of their respective owners.

www.robertshaw.com
www.Uni-Line.com
©2014 Robertshaw
09/14 - 150-2367 RevB